



POLYMER PVT. LTD.

PRECISED SHAPING

AN ISO 9001:2015 CERTIFIED COMPANY



www.tecafine.com

ABOUT US

Tecafine Pvt. Ltd. is spread over 10,000 square feet of area and well equipped with state of the art machinery and instruments. We are one of the largest manufacturer and exporter of PP/HDPE Sheets, Rods and Pipe Spacers. Our expertise is in providing customized solutions for HDPE and PP material.

We, **Tecafine** believe in staying ahead of today's technological race by implementing latest machineries as well as equipments to fulfill requirements of our customers with best quality at best possible price.

Tecafine has won trust of their customers within a short period of time by "Customer first" approach and emerged as one of the best leading manufacturer in the field of Polymer products.

Why Us ?

Over 40 years experience working with plastics

Our highly qualified team has the knowledge and experience to ensure that every order is completed to the highest standards.

Dedicated customer support team

We strongly believe in excellent customer service and our support team is on standby from 10 am to 8.00 pm Monday – Saturday to deal with any queries you may have regarding your order. We always try to answer customer's emails within 24hrs.

Satisfied customers

Over the years we have fulfilled requirements of a wide range of customers from large corporations to private individuals.

Fast and well-packaged delivery service

We have an excellent relationship with our Transporter service and all orders are meticulously packed using a variety of materials to ensure the sheets arrive in excellent condition. Where necessary, larger sheets may be shipped on a pallet(s) to guarantee against breakage. We aim to dispatch your order within 3 working days however during busy periods this may extend to 5 - 7 working days.

Highest grades of material guaranteed

We pride ourselves in providing high quality of material at best & lower cost possible.

Our Vision

To provide superior quality of Polymer Products through our "Customer First" approach and build a long term relationship with our clients.

Our Mission

Keep doing constant R & D to provide our clients sustainable and efficient product at minimum possible cost.

TRIBUTE

Late Mr. Mansukhbhai D Parmar,

Founder of Shiv Plastic Industries, established Shiv Plastic in 1970, with the simple purpose of providing superior quality of Polymer Products at competitive price. Then, the company was a backyard start-up, producing agriculture fittings.

Late Mr. Mansukhbhai was the pacesetter of the company, leading by example and exemplifying the values of teamwork, initiative, commitment and continuous improvement - the 4 core values of Tecafine today. He emphasized on product quality, precision and exquisiteness, while stressing upon process accuracy, efficiency and effectiveness. Though he was firm in his management, he treated his employees with fairness and benevolence. He strongly believed in "equality", ensuring all the employees belong, and enjoy a share of the fruits of labour which they have been a part of.

Late Mr. Mansukhbhai passed away peacefully on 03rd January, 2015. He was 67. It was a time of great sadness and bereavement and while we mourn the loss, we should also celebrate the achievements he had made, the many lives he had touched, and the great man that he had become. As his sons, our Chairman and Managing Director, Mr. Hitesh and Mr. Vipul, so aptly put forth, "The best way to pay tribute to our Founder, is to continue living his dream and work hard together to bring Tecafine to greater heights."



OUR PRODUCTS

1. HDPE - High Density Polyethylene Plastic Sheet

Tecafine has extensive experience manufacturing HDPE (High Density Polyethylene) plastic sheet. HDPE exhibits high-impact strength, corrosion and abrasion resistance, and a low coefficient of friction. HDPE is moisture, stain and odor resistant, making it an ideal material for a variety of industrial and commercial applications. HDPE has good insulation properties and is easy to weld. The operating temperature is from -58 °F to +194 °F. HDPE is a cost effective material for both indoor and outdoor applications.

These sheets can be heat formed, shaped and welded to fabricate ducts, hoods and much more. Material cannot be cemented but it is easily welded with plastic welder. It can be cut with a carbide tipped saw blade and drilled with regular metal bits.



2. PP – Polypropylene Sheet

Tecafine Polymer manufactures polypropylene sheet is a lightweight, chemical and heat resistant plastic that offers an excellent balance of thermal, chemical and electrical resistance properties with moderate impact strength (except at low temperatures). Based on its corrosive resistance and welding properties, polypropylene is frequently used in chemical and industrial applications.

Polypropylene offers a good balance of thermal, chemical and electrical properties with moderate strength. It possesses a good strength to weight ratio and due to its hard, high gloss surface, polypropylene is ideally suited to environments where there is concern for bacteria build up that can interfere with flow.

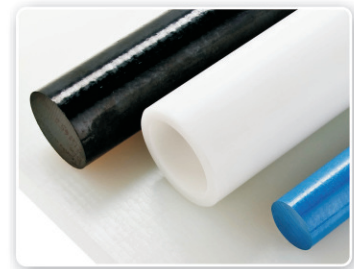


3. HDPE & PP Rods And Shape

Tecafine Polymer Pvt Ltd is renowned name in manufacturing of HDPE/PP rod for the past 5 years HDPE/PP rods are used in industrial applications due to its unique properties.

Polypropylene Rod offer excellent impact strength and chemical resistance as well as high mechanical and tensile strength. Polypropylene Rod have good notched impact strength, are easy to weld and has an excellent resistance to stress cracking.

High Density Polyethylene has a good chemical resistance to almost all acids and bases, detergents and hot water. HDPE has good insulation properties and is easy to weld.



4. Pipe Spacers

Tecafine Polymer Pvt Ltd has become familiar name in piping industry with its customized designs, technical assistance and continuous R & D for Pipe spacer. Our pipe spacer ranges between 40 mm to 1800 mm.

Tecafine has achieved many mile stone in piping industry by working on many reputed government as well as private project in short spam.

Spacers are designed to support and cradle conduit for ease of installation, allowing optimal free flow of grout, thereby eliminating voids. Bore Spacers also maintain accurate duct position and alignment that will result in a reduction of installation time, isolation, boosting efficiency and ensuring that the installation is performed correctly.



Properties

- High Density
- High elongation at break
- Low steam permeability
- High Toughness
- Very low water absorption
- Food safe
- Soft surface
- Very good electrical and dielectric properties
- Good protection against stress cracking
- Natural color is not weather resistant

Chart

- Outdoor Weathering :- Fair
- Clear or Opaque :- Opaque
- Impact Strength :- Excellent
- Coefficient Of Thermal Expansion :-Fair
- Rigidity :- Good
- Heat Distortion Temperature :- Good

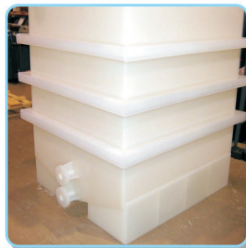
Advantages

- High-Impact Strength
- Corrosion Resistant
- Abrasion Resistant
- Low-Coefficient of Friction
- FDA Compliant

Applications



CRATES



TANKS



TRANSPORTING



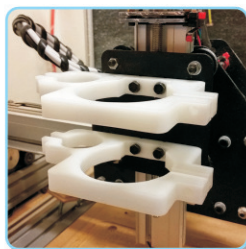
GEARS



PACKING



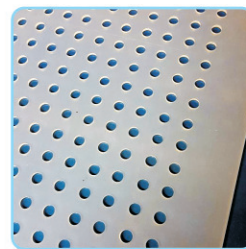
PALLETS



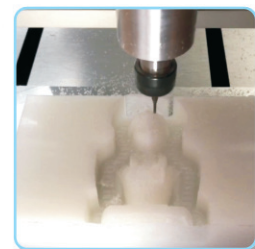
ELECTRICAL



SPACER



SEPARATOR



CUSTOMIZED

Technical Properties

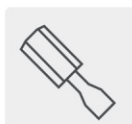
Properties	Test Method	Units	Value
Density (at 23°C)	ASTM D 1505	g/cm ²	0.950
Physical Property			
Tensile Strength at Yield**		Mpa	21
Tensile Strength at Break**	ASTM D 638	Mpa	35
Elongation at Break**		%	> 1000
Izod Impact Strength (Notched)	ASTM D 256	J/m	> 500
Flexural Modulus	ASTM D 790	Mpa	850
Hardness	ASTM D 2240	Shore D	65
DCS Melting Temperature	ASTM D 2117	C	131

Product Details

Width	Length	Thickness	Color
1000MM	2000MM	1MM to 25 MM	Black, White, Blue, Red
1220MM	2440MM	1MM to 25 MM	Black, White, Blue, Red
1250MM	2000MM	1MM to 25 MM	Black, White, Blue, Red
1500MM	3000MM	1MM to 25 MM	Black, White, Blue, Red
1000MM	2000MM	30MM to 100 MM	Natural White
1200MM	2000MM	30MM to 100 MM	Natural White

Note : Our current machines work to a tolerance Thickness of +/- 0.2mm & +/- 15mm Width/Length
Colour of sheets may differ slightly due to variance in computer monitors.

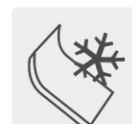
Operations :



BOLTING



COLD CURVING



COLD FORMING



DIE CUTTING



DRILLING



GLUEING

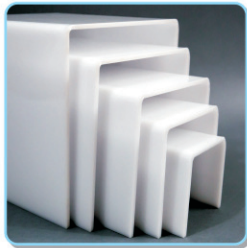


LASER CUTTING

Properties

- Low density
 - High surface strength
 - Low abrasion resistance
 - Natural color is not weather resistance
 - High heat resistance
 - Very high chemical resistance
 - Brittle in the coldness
 - High tensile strength
 - Low oxidation resistance
 - HF-Welding not possible
- Chart**
- Outdoor Weathering :- Fair To Poor
 - Coefficient Of Thermal Expansion:- Fair
 - Impact Strength:- Outstanding
 - Heat Distortion Temperature:- Good
 - Rigidity :- Good
 - Clear or Opaque:- Opaque
- Advantages**
- Fair Impact Strength
 - Stress crack resistant
 - Corrosive Resistant
 - Easily Welded and Machine
 - Moisture Resistant
 - FDA Compliant
 - Heat Resistant

Applications



ELECTRICAL



TANKS



FOOD



INDUSTRIAL PARTS



CONVEYOR



SHUTTERING



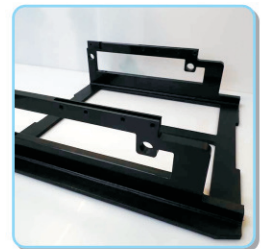
MEDICAL



ADVERTISE



CONSTRUCTION



CUSTOMIZED

Technical Properties

Properties	Test Method	Units	Value
Density	ASTM D 1505	g/cm ²	0.93
Tensile Strength @ Yield	ASTM D 638	Mpa	26.5
Elongation @ Yield	ASTM D 638	%	11
Flexural Modulus	ASTM D 790	Mpa	1000
Impact Strength	ASTM D 256	J/m	225
Vicat Softening Point	ASTM D 1526	°C	150
HDT (0.45 N/m)	ASTM D 648	°C	86
Shore Hardness	ASTM D 648	°C	70

Product Details

Width	Length	Thickness	Color
1000MM	2000MM	1MM to 25 MM	Black, White, Blue, S.Grey
1220MM	2440MM	1MM to 25 MM	Black, White, Blue, S.Grey
1250MM	2000MM	1MM to 25 MM	Black, White, Blue, S.Grey
1500MM	3000MM	1MM to 25 MM	Black, White, Blue, S.Grey
1000MM	2000MM	30MM to 100 MM	Natural White
1200MM	2000MM	30MM to 100 MM	Natural White

Note : Our current machines work to a tolerance Thickness of +/- 0.2mm & +/- 15mm Width/Length
Colour of sheets may differ slightly due to variance in computer monitors.

Operations :



MILLING



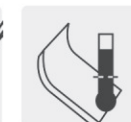
RIVETING



SAWING



TURNING



WARM BENDING



WATER JET CUTTING



WELDING

HDPE & PP Rods

High Density Polyethylene & Polypropylene Rods

HDPE Properties

- High Density
- High elongation at break
- Low steam permeability
- Soft surface
- Good protection against stress cracking
- Natural color is not weather resistant
- High Toughness
- Very low water absorption
- Food safe
- Very good electrical and dielectric properties

Chart

- Outdoor Weathering :- Fair
- Rigidity :- Good
- Coefficient Of Thermal Expansion :- Fair
- Heat Distortion Temperature :- Good
- Impact Strength :- Excellent
- Clear or Opaque :- Opaque

Advantages

- High-Impact Strength
- Abrasion Resistant
- Corrosion Resistant
- Low-Coefficient of Friction

PP Properties

- Low density
- High tensile strength
- Low oxidation resistance
- Brittle in the coldness
- Natural color is not weather resistance
- High heat resistance
- High surface strength
- Low abrasion resistance
- HF-Welding not possible

Chart

- Outdoor Weathering :- Fair To Poor
- Impact Strength:- Outstanding
- Coefficient Of Thermal Expansion:- Fair
- Heat Distortion Temperature:- Good
- Clear or Opaque:- Opaque

Advantages

- Fair Impact Strength
- Moisture Resistant
- Stress crack resistant
- Corrosive Resistant
- Heat Resistant
- Easily Welded and Machine

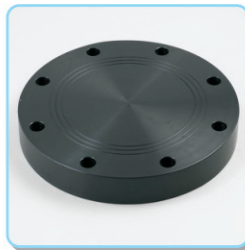
Applications



CYLINDER



PULLEY WHEEL



FLANGE



SCREWS



TURNING



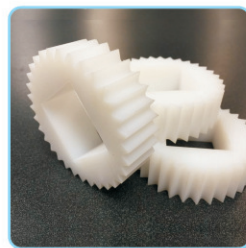
BUSHES



WELDING RODS



WASHERS



GEARS



CUSTOMIZED

Product Specification

MATERIAL	High Density Polyethylene	Polypropylene
DIAMETER	18 mm to 305 mm	18 mm to 305 mm
LENGTH	1000 mm or 2000 mm	1000 mm or 2000 mm
COLOR	Natural, Black	Natural, Black
DENSITY	0.96g/cm ³	0.93g/cm ³
MATERIAL	100% Virgin HDPE Granule	100% Virgin HDPE Granule
SOFT POINT	100 Degree	100 Degree

Note : Our current machines work to a tolerance Thickness of +/- 0.5mm & +/- 15mm Length
Colour of sheets may differ slightly due to variance in computer monitors.

Product Features

- Easy to weld using thermoplastic welding equipment
- Low moisture absorption
- Good chemical resistance
- Very low co-efficient of friction.
- Extremely tough
- Excellent aesthetic properties
- Easy to fabricate
- Very high surface release properties

Pipe Spacer

We offer two ranges of Pipe Spacers. Modular Spacer & Casing Spacer, both types are used to support and electrically insulate a pipeline from a casing pipe through which it must pass. Typical uses include river, canal, highway, bridge and railway crossings.

Advantages

- Easy and efficient to install
- It allows damaged pipes to be repaired or replaced quickly
- High abrasion resistance and low coefficient of friction
- Provide an economical alternative to metallic casing spacers.
- Conduit to conduit separation to customer specification
- Decades of reliability
- Excellent insulation
- Multiple conduit sizes and designs
- Injection molded from HDPE, PP and ABS
- Accommodates any type conduit or casing pipe

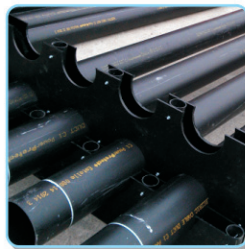
Applications



TELECOMMUNICATIONS



CHEMICALS



WATER TRANSMISSION



WASTE WATER

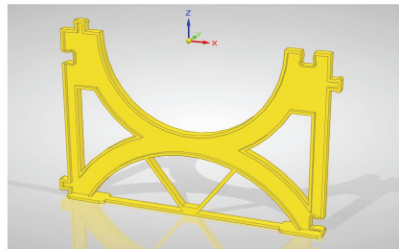
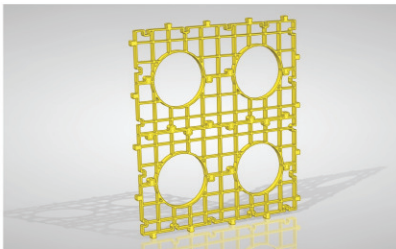


ELECTRICAL INDUSTRIES

Our range of pipe casing spacers / Insulators centre water and sewer pipes in casings.

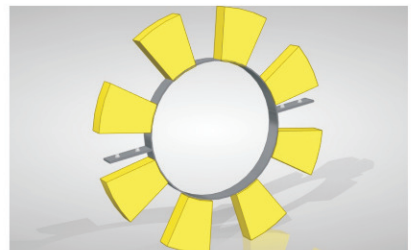
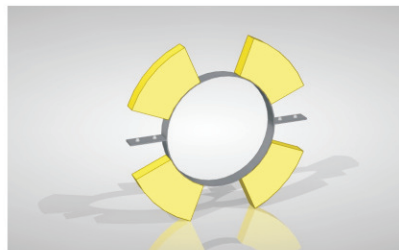
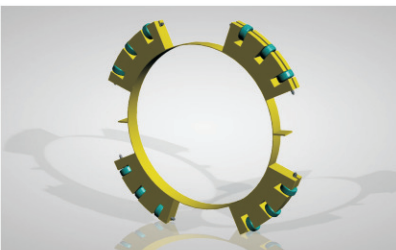
Modular Pipe Spacer

For Diameter 40MM to 225MM



Casing Pipe spacer

For Diameter More than 250MM



Manufacturing Facilities

- Polymer sheet extrusion line
- Polymer rod extrusion line
- Drilling, Circular Saw
- Hydraulic Press for Thermoforming
- Injection moulding machine
- VMC, CNC, Routing machines
- Polymer welding machine
- Automatic Packaging Machine

Clientele



L&T Construction



OUR VALUES

Our Blue Box Values reflect who we are and what we stand for as a company

Customer Commitment : We develop relationships that make a positive difference in our customer' lives.

Quality : We provide outstanding products and unsurpassed service that, together, deliver premium value to our customers.

Integrity : We uphold the highest standards of integrity in all of our actions.

Teamwork : We work together, across boundaries, to meet the needs of our customers and to help the company win.

Respect for people : We value people, encourage their development and reward their performance.

A Will to win : We exhibit a strong will to win in the marketplace and in every aspect of our business.

Personal Accountability : We are personally accountable for delivering on our commitments.



📍 **Regd. Office** : No. 71/72, 3rd Floor, Samruddhi Bhavan,
Opp Bombay Petrol Pump, Gondal Road, Rajkot - 360002.
Gujarat - India Tel.: +91-281-2460697

📍 **Factory** : S - 1, Plot No : 7, Survey No : 28, Kalawad Road,
At. Haripar Pal - 360005. Dist: Rajkot. Gujarat - India

📞 +91 76210 77775

✉ info@tecafine.com

✉ vipul@tecafine.com

🌐 www.tecafine.com

